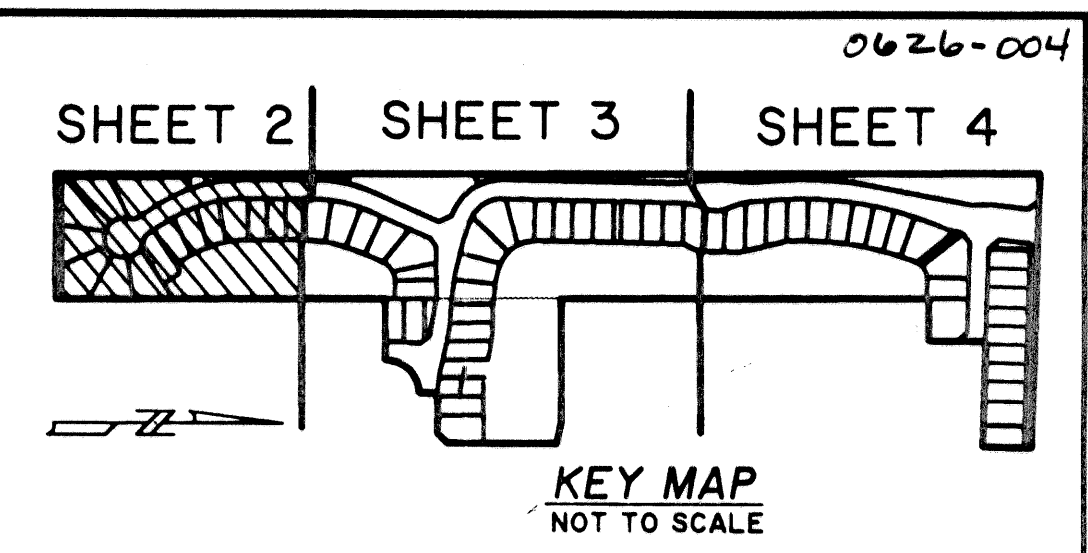
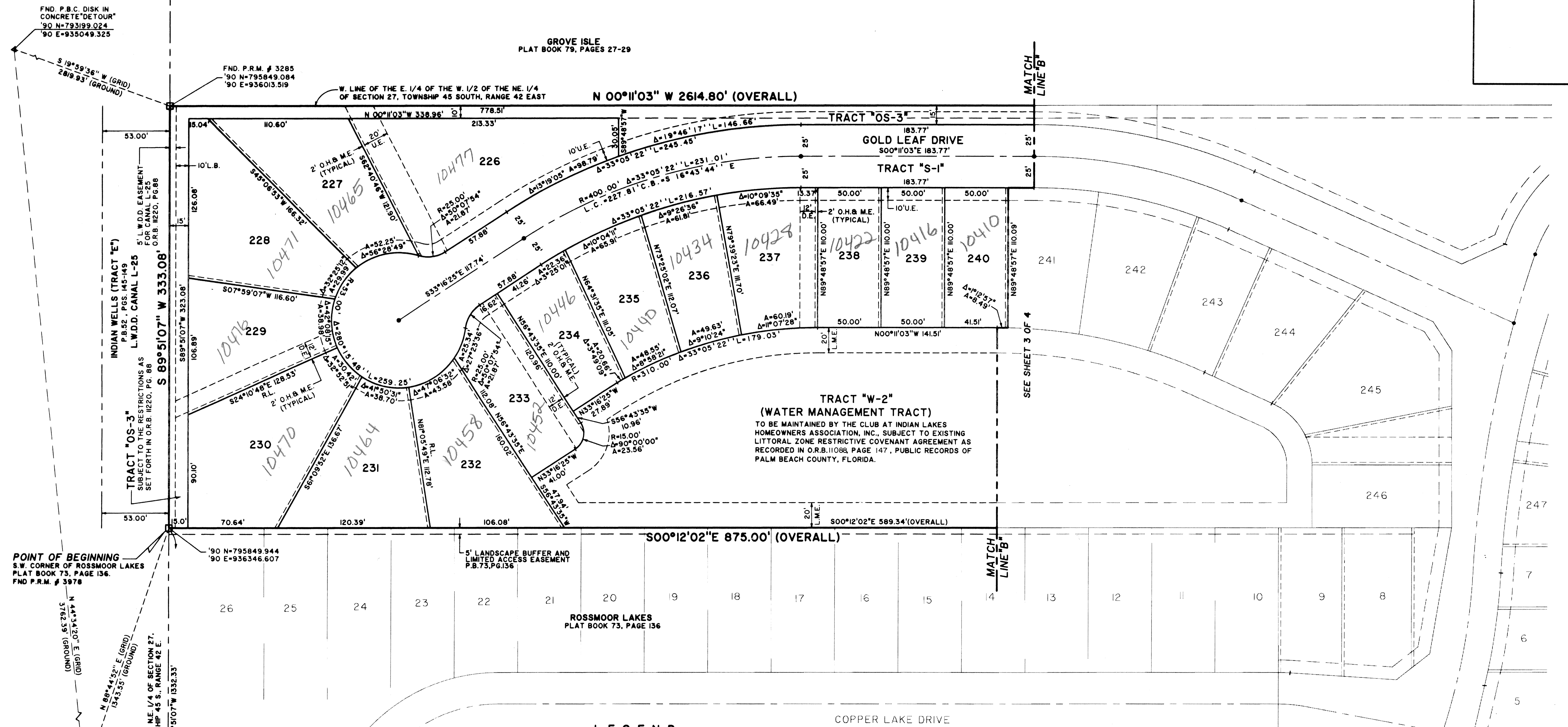


THE CLUB AT INDIAN LAKES

BEING A REPLAT OF A PORTION OF ROSSMOOR LAKES AS RECORDED IN PLAT BOOK 73, PAGES 136 THROUGH 141 AND A PORTION OF ROSSMOOR LAKES REPLAT AS RECORDED IN PLAT BOOK 80, PAGES III THROUGH I13, PUBLIC RECORDS OF PALM BEACH COUNTY, FLORIDA AND LYING IN AND BEING A PORTION OF SECTION 27, TOWNSHIP 45 SOUTH, RANGE 42 EAST, PALM BEACH COUNTY, FLORIDA.
SHEET 2 OF 4



201



FND. P.B.C. DISK IN CONCRETE "DETOUR"
'90 N=793199.024
'90 E=935049.325

S 19°59'36" W (GRID)
2819.93' (GROUND)

FND. P.R.M. # 3285
'90 N=795849.084
'90 E=936013.519

W. LINE OF THE E. 1/4 OF THE W. 1/2 OF THE NE. 1/4 OF SECTION 27, TOWNSHIP 45 SOUTH, RANGE 42 EAST

INDIAN WELLS (TRACT "E")
P.B.52, P.GS. 145-149
L.W.D.D. CANAL L-25
SUBJECT TO THE RESTRICTIONS AS SET FORTH IN O.R.B. 11220, PG. 86

TRACT "OS-3"
SUBJECT TO THE RESTRICTIONS AS SET FORTH IN O.R.B. 11220, PG. 86

POINT OF BEGINNING
S.W. CORNER OF ROSSMOOR LAKES
PLAT BOOK 73, PAGE 136.
FND P.R.M. # 3978

FND. P.B.C. DISK IN CONCRETE "PUFF"
'90 N=795879.310
'90 E=937689.881

S. LINE NE. 1/4 OF SECTION 27, TOWNSHIP 45 S., RANGE 42 E.
S 89°51'07" W 1332.33'

POINT OF COMMENCEMENT
S.E. CORNER OF NE. 1/4 OF SECTION 27, TOWNSHIP 45 S., RANGE 42 E.
FOUND PALM BEACH COUNTY DISK IN CONCRETE.

FND. P.B.C. DISK IN CONCRETE "DETOUR"
'90 N=793199.024
'90 E=935049.325

Landmark Surveying & Mapping Inc.
1850 Forest Hill Boulevard Suite 100
(561) 433-5405 West Palm Beach, Florida 33406
LB # 4396

THE CLUB AT INDIAN LAKES